

- A. General**
- This site plan is prepared under the Aggregate Resources Act for a Class 'A' licence for a pit and quarry under the ground water table.
  - Area Calculations:
    - 2.1. Licence (total) 261.3 hectares
    - Main Area 151.5 hectares
    - North Area 30.3 hectares
    - South Area 79.4 hectares
  - Northing and easting coordinates have been provided for select corners of the licence boundaries and at the centre point of every extension and exit that intersects the licence boundaries on the plan view of this drawing.
- B. References**
- Contours were obtained from First Base Solutions and are displayed in one metre intervals. Elevations shown are in metres above sea level (MASL).
  - Topographic information was obtained from numerous sources including First Base Solutions, Land Information Ontario and field investigations for technical reports.
  - All topographic features and structures are shown to scale in Universal Transverse Mercator (UTM) with North American Datum 1983 (NAD83), Zone 17 (West), Central Meridian 81 degrees west coordinate system.
  - The Main Area licence boundary was established based on a completed plan of survey completed by Delph J. Jenkins North Limited (Delph) on February 14, 2023 which defined the following information: Plan 43R-3963, 43R-2907, 43R-2255, 43R-1617, 43R-1782, 43R-4021, 43R-2143, 43R-2142, and instruments R0114881 and R0191401. The North and South Area licence boundaries are based on the Municipal Property Assessment Corporation's parcel fabric.
  - Existing zoning on and within 120 metres of the licence boundaries are from the Town of Caledon Zoning By-law 2008-05, Schedule 'N', Zone M50, as last updated August 21, 2019, 14 (last updated March 24, 2016) and 19 (last updated August 21, 2018). The Main Area is currently zoned Agricultural Zone (A1) and Environmental Policy Area 2 Zone (EPZA) while the North and South Areas are currently zoned Agricultural Zone (A1).
  - Existing land use designations within 120 metres of the licence boundaries are from the Niagara Escarpment Plan, Part 4, dated June 1, 2017.
  - Land use information and structures identified on and within 120 metres of the licence boundaries were determined using aerial photography captured in the spring of 2021 from First Base Solutions.
- C. Drainage**
- Surface drainage on and within 120 metres of the licence boundaries is by overland flow in the directions shown by arrows on the plan view, or by infiltration.
- D. Groundwater**
- The maximum predicted groundwater table, based on groundwater levels monitored over a 12 month period from January to December 2021, are as follows:
    - 1.1. Main Area - Ranges from 420.7 to 393.5 masl (north to southwest).
    - 1.2. North Area - Ranges from 407.4 to 392.1 masl (northwest to southwest).
    - 1.3. South Area - Ranges from 405.3 to 391.0 masl (northwest to south).
  - The maximum predicted groundwater table elevations are shown at each cross section on drawing 1 of 54 and on page 14 of 5.
- E. Site Access and Fencing**
- The Main Area has four existing access points (two on Mississauga Road and two on Charleston Sidewalk), the North Area has two existing access points (one on Main Street and one on Charleston Sidewalk), and the South Area has four existing access points (one on Mississauga Road and three on Charleston Sidewalk). None of the existing access points are gated.
  - Post and wire fencing (or other existing fence) is located shown on the plan view.
- F. Significant Natural and Human-Made Features on and Within 120 Metres**
- There is a pond and Ministry of Natural Resources and Forestry (MNRF) and WSP identified unevaluated wetlands (other) within the Main Area licence boundary.
  - There is Significant Wildlife Habitat and habitat for endangered and threatened species within the Main and South Area licence boundary.
  - There are Significant Wetlands, Significant Wildlife Habitat for endangered and threatened species and MNRF and WSP identified wetlands (unevaluated), Provincially Significant and other) outside of the licence boundaries within 120 metres.
- G. Aggregate Related Site Features**
- There are no existing aggregate operations or features on-site such as processing areas with stationary or portable equipment, stockpiles, recyclable materials, scrap, fuel storage, haul roads, berms or excavation faces.
  - Cross sections depicting existing operations are shown on the drawing.
  - Cross sections depicting post-rehabilitation conditions are shown on drawing #4 of 5.
  - Cross section locations are identified on the plan view of each drawing.
- H. Cross Sections**
- Cross sections depicting existing operations are shown on the drawing.
  - Cross sections depicting post-rehabilitation conditions are shown on drawing #4 of 5.
  - Cross section locations are identified on the plan view of each drawing.
- I. Technical Reports - References**
- Agricultural Impact Assessment, Caville Consulting Inc., December 16, 2022 (Revised July 2023)
  - Stage 1 and 2 Archaeological Assessment, Golder Associates Ltd., November 14, 2022
  - Cultural Heritage Report: Existing Conditions and Preliminary Impact Assessment, Golder Associates Ltd., December 16, 2022 (Revised July 2023)
  - Air Quality Impact Assessment, Golder Associates Ltd., December 16, 2022 (Revised July 2023)
  - Noise Report, Golder Associates Ltd., December 16, 2022 (Revised July 2023)
  - Blast Impact Assessment, Golder Associates Ltd., December 16, 2022 (Revised July 2023)
  - Natural Environment Report, Golder Associates Ltd., December 16, 2022 (Revised July 2023)
  - Water Resources Report, Golder Associates Ltd., December 15, 2022 (Revised July 2023)
  - Visual Impact Assessment Report, Golder Associates Ltd., December 16, 2022 (Revised July 2023)
  - Planning Justification Report and Aggregate Resource Act Summary Statement, GSAI and MHBC, December 16, 2022 (Revised July 2023)
  - Maximum Predicted Water Table Report, Golder Associates Ltd., December 16, 2022 (Revised July 2023)
  - Soils-Economic Assessment Report, Golder Associates Ltd., December 16, 2022 (Revised July 2023)
  - Transportation Impact Study and Haul Road Assessment, TVL, December 16, 2022 (Revised March 2023)
  - Water Resources Addendum Report, WSP Canada Inc., March 2025
  - Stage 3 Archaeological Assessment - Location 1 (A1/A1-23), WSP Canada Inc., August 2, 2024
  - Stage 3 Archaeological Assessment - Location 2 (A1/A1-24), WSP Canada Inc., August 2, 2024
  - Stage 3 Archaeological Assessment - Location 3 (A1/A1-25), WSP Canada Inc., August 2, 2024
  - Stage 3 Archaeological Assessment - Location 4 (A1/A1-26), WSP Canada Inc., August 2, 2024
  - Stage 3 Archaeological Assessment - Location 5 (A1/A1-27), WSP Canada Inc., August 2, 2024
  - Stage 3 Archaeological Assessment - Location 6 (A1/A1-28), WSP Canada Inc., August 2, 2024
  - Stage 3 Archaeological Assessment - Location 7 (A1/A1-29), WSP Canada Inc., August 2, 2024
  - Stage 3 Archaeological Assessment - Location 8 (A1/A1-30), WSP Canada Inc., August 2, 2024
  - Stage 3 Archaeological Assessment - Location 9 (A1/A1-31), WSP Canada Inc., August 2, 2024
  - Stage 3 Archaeological Assessment - Location 10 (A1/A1-32), WSP Canada Inc., August 2, 2024
  - Stage 3 Archaeological Assessment - Location 11 (A1/A1-33), WSP Canada Inc., August 2, 2024
  - Stage 3 Archaeological Assessment - Location 12 (A1/A1-34), WSP Canada Inc., August 2, 2024
  - Stage 3 Archaeological Assessment - Location 13 (A1/A1-35), WSP Canada Inc., August 2, 2024
  - Stage 3 Archaeological Assessment - Location 14 (A1/A1-36), WSP Canada Inc., August 2, 2024
  - Stage 3 Archaeological Assessment - Location 15 (A1/A1-37), WSP Canada Inc., August 2, 2024
  - Stage 3 Archaeological Assessment - Location 16 (A1/A1-38), WSP Canada Inc., August 2, 2024
  - Stage 3 Archaeological Assessment - Location 17 (A1/A1-39), WSP Canada Inc., August 2, 2024
  - Stage 3 Archaeological Assessment - Location 18 (A1/A1-40), WSP Canada Inc., August 2, 2024
  - Stage 3 Archaeological Assessment - Location 19 (A1/A1-41), WSP Canada Inc., August 2, 2024
  - Stage 3 Archaeological Assessment - Location 20 (A1/A1-42), WSP Canada Inc., August 2, 2024
  - Stage 3 Archaeological Assessment - Location 21 (A1/A1-43), WSP Canada Inc., August 2, 2024
  - Stage 3 Archaeological Assessment - Location 22 (A1/A1-44), WSP Canada Inc., August 2, 2024
  - Stage 3 Archaeological Assessment - Location 23 (A1/A1-45), WSP Canada Inc., August 2, 2024
  - Stage 3 Archaeological Assessment - Location 24 (A1/A1-46), WSP Canada Inc., August 2, 2024
  - Stage 3 Archaeological Assessment - Location 25 (A1/A1-47), WSP Canada Inc., August 2, 2024
  - Stage 3 Archaeological Assessment - Location 26 (A1/A1-48), WSP Canada Inc., August 2, 2024
  - Stage 3 Archaeological Assessment - Location 27 (A1/A1-49), WSP Canada Inc., August 2, 2024
  - Stage 3 Archaeological Assessment - Location 28 (A1/A1-50), WSP Canada Inc., August 2, 2024
  - Stage 3 Archaeological Assessment - Location 29 (A1/A1-51), WSP Canada Inc., August 2, 2024
  - Stage 3 Archaeological Assessment - Location 30 (A1/A1-52), WSP Canada Inc., August 2, 2024
  - Stage 3 Archaeological Assessment - Location 31 (A1/A1-53), WSP Canada Inc., August 2, 2024
  - Stage 3 Archaeological Assessment - Location 32 (A1/A1-54), WSP Canada Inc., August 2, 2024
  - Stage 3 Archaeological Assessment - Location 33 (A1/A1-55), WSP Canada Inc., August 2, 2024
  - Stage 3 Archaeological Assessment - Location 34 (A1/A1-56), WSP Canada Inc., August 2, 2024
  - Stage 3 Archaeological Assessment - Location 35 (A1/A1-57), WSP Canada Inc., August 2, 2024
  - Stage 3 Archaeological Assessment - Location 36 (A1/A1-58), WSP Canada Inc., August 2, 2024
  - Stage 3 Archaeological Assessment - Location 37 (A1/A1-59), WSP Canada Inc., August 2, 2024
  - Stage 3 Archaeological Assessment - Location 38 (A1/A1-60), WSP Canada Inc., August 2, 2024
  - Stage 3 Archaeological Assessment - Location 39 (A1/A1-61), WSP Canada Inc., August 2, 2024
  - Stage 3 Archaeological Assessment - Location 40 (A1/A1-62), WSP Canada Inc., August 2, 2024
  - Stage 3 Archaeological Assessment - Location 41 (A1/A1-63), WSP Canada Inc., August 2, 2024
  - Stage 3 Archaeological Assessment - Location 42 (A1/A1-64), WSP Canada Inc., August 2, 2024
  - Stage 3 Archaeological Assessment - Location 43 (A1/A1-65), WSP Canada Inc., August 2, 2024
  - Stage 3 Archaeological Assessment - Location 44 (A1/A1-66), WSP Canada Inc., August 2, 2024
  - Stage 3 Archaeological Assessment - Location 45 (A1/A1-67), WSP Canada Inc., August 2, 2024
  - Stage 3 Archaeological Assessment - Location 46 (A1/A1-68), WSP Canada Inc., August 2, 2024
  - Stage 3 Archaeological Assessment - Location 47 (A1/A1-69), WSP Canada Inc., August 2, 2024
  - Stage 3 Archaeological Assessment - Location 48 (A1/A1-70), WSP Canada Inc., August 2, 2024
  - Stage 3 Archaeological Assessment - Location 49 (A1/A1-71), WSP Canada Inc., August 2, 2024
  - Stage 3 Archaeological Assessment - Location 50 (A1/A1-72), WSP Canada Inc., August 2, 2024
  - Stage 3 Archaeological Assessment - Location 51 (A1/A1-73), WSP Canada Inc., August 2, 2024
  - Stage 3 Archaeological Assessment - Location 52 (A1/A1-74), WSP Canada Inc., August 2, 2024
  - Stage 3 Archaeological Assessment - Location 53 (A1/A1-75), WSP Canada Inc., August 2, 2024
  - Stage 3 Archaeological Assessment - Location 54 (A1/A1-76), WSP Canada Inc., August 2, 2024
  - Stage 3 Archaeological Assessment - Location 55 (A1/A1-77), WSP Canada Inc., August 2, 2024
  - Stage 3 Archaeological Assessment - Location 56 (A1/A1-78), WSP Canada Inc., August 2, 2024
  - Stage 3 Archaeological Assessment - Location 57 (A1/A1-79), WSP Canada Inc., August 2, 2024
  - Stage 3 Archaeological Assessment - Location 58 (A1/A1-80), WSP Canada Inc., August 2, 2024
  - Stage 3 Archaeological Assessment - Location 59 (A1/A1-81), WSP Canada Inc., August 2, 2024
  - Stage 3 Archaeological Assessment - Location 60 (A1/A1-82), WSP Canada Inc., August 2, 2024
  - Stage 3 Archaeological Assessment - Location 61 (A1/A1-83), WSP Canada Inc., August 2, 2024
  - Stage 3 Archaeological Assessment - Location 62 (A1/A1-84), WSP Canada Inc., August 2, 2024
  - Stage 3 Archaeological Assessment - Location 63 (A1/A1-85), WSP Canada Inc., August 2, 2024
  - Stage 3 Archaeological Assessment - Location 64 (A1/A1-86), WSP Canada Inc., August 2, 2024
  - Stage 3 Archaeological Assessment - Location 65 (A1/A1-87), WSP Canada Inc., August 2, 2024
  - Stage 3 Archaeological Assessment - Location 66 (A1/A1-88), WSP Canada Inc., August 2, 2024
  - Stage 3 Archaeological Assessment - Location 67 (A1/A1-89), WSP Canada Inc., August 2, 2024
  - Stage 3 Archaeological Assessment - Location 68 (A1/A1-90), WSP Canada Inc., August 2, 2024
  - Stage 3 Archaeological Assessment - Location 69 (A1/A1-91), WSP Canada Inc., August 2, 2024
  - Stage 3 Archaeological Assessment - Location 70 (A1/A1-92), WSP Canada Inc., August 2, 2024
  - Stage 3 Archaeological Assessment - Location 71 (A1/A1-93), WSP Canada Inc., August 2, 2024
  - Stage 3 Archaeological Assessment - Location 72 (A1/A1-94), WSP Canada Inc., August 2, 2024
  - Stage 3 Archaeological Assessment - Location 73 (A1/A1-95), WSP Canada Inc., August 2, 2024
  - Stage 3 Archaeological Assessment - Location 74 (A1/A1-96), WSP Canada Inc., August 2, 2024
  - Stage 3 Archaeological Assessment - Location 75 (A1/A1-97), WSP Canada Inc., August 2, 2024
  - Stage 3 Archaeological Assessment - Location 76 (A1/A1-98), WSP Canada Inc., August 2, 2024
  - Stage 3 Archaeological Assessment - Location 77 (A1/A1-99), WSP Canada Inc., August 2, 2024
  - Stage 3 Archaeological Assessment - Location 78 (A1/A1-100), WSP Canada Inc., August 2, 2024
  - Stage 3 Archaeological Assessment - Location 79 (A1/A1-101), WSP Canada Inc., August 2, 2024
  - Stage 3 Archaeological Assessment - Location 80 (A1/A1-102), WSP Canada Inc., August 2, 2024
  - Stage 3 Archaeological Assessment - Location 81 (A1/A1-103), WSP Canada Inc., August 2, 2024
  - Stage 3 Archaeological Assessment - Location 82 (A1/A1-104), WSP Canada Inc., August 2, 2024
  - Stage 3 Archaeological Assessment - Location 83 (A1/A1-105), WSP Canada Inc., August 2, 2024
  - Stage 3 Archaeological Assessment - Location 84 (A1/A1-106), WSP Canada Inc., August 2, 2024
  - Stage 3 Archaeological Assessment - Location 85 (A1/A1-107), WSP Canada Inc., August 2, 2024
  - Stage 3 Archaeological Assessment - Location 86 (A1/A1-108), WSP Canada Inc., August 2, 2024
  - Stage 3 Archaeological Assessment - Location 87 (A1/A1-109), WSP Canada Inc., August 2, 2024
  - Stage 3 Archaeological Assessment - Location 88 (A1/A1-110), WSP Canada Inc., August 2, 2024
  - Stage 3 Archaeological Assessment - Location 89 (A1/A1-111), WSP Canada Inc., August 2, 2024
  - Stage 3 Archaeological Assessment - Location 90 (A1/A1-112), WSP Canada Inc., August 2, 2024
  - Stage 3 Archaeological Assessment - Location 91 (A1/A1-113), WSP Canada Inc., August 2, 2024
  - Stage 3 Archaeological Assessment - Location 92 (A1/A1-114), WSP Canada Inc., August 2, 2024
  - Stage 3 Archaeological Assessment - Location 93 (A1/A1-115), WSP Canada Inc., August 2, 2024
  - Stage 3 Archaeological Assessment - Location 94 (A1/A1-116), WSP Canada Inc., August 2, 2024
  - Stage 3 Archaeological Assessment - Location 95 (A1/A1-117), WSP Canada Inc., August 2, 2024
  - Stage 3 Archaeological Assessment - Location 96 (A1/A1-118), WSP Canada Inc., August 2, 2024
  - Stage 3 Archaeological Assessment - Location 97 (A1/A1-119), WSP Canada Inc., August 2, 2024
  - Stage 3 Archaeological Assessment - Location 98 (A1/A1-120), WSP Canada Inc., August 2, 2024
  - Stage 3 Archaeological Assessment - Location 99 (A1/A1-121), WSP Canada Inc., August 2, 2024
  - Stage 3 Archaeological Assessment - Location 100 (A1/A1-122), WSP Canada Inc., August 2, 2024
  - Stage 3 Archaeological Assessment - Location 101 (A1/A1-123), WSP Canada Inc., August 2, 2024
  - Stage 3 Archaeological Assessment - Location 102 (A1/A1-124), WSP Canada Inc., August 2, 2024
  - Stage 3 Archaeological Assessment - Location 103 (A1/A1-125), WSP Canada Inc., August 2, 2024
  - Stage 3 Archaeological Assessment - Location 104 (A1/A1-126), WSP Canada Inc., August 2, 2024
  - Stage 3 Archaeological Assessment - Location 105 (A1/A1-127), WSP Canada Inc., August 2, 2024
  - Stage 3 Archaeological Assessment - Location 106 (A1/A1-128), WSP Canada Inc., August 2, 2024
  - Stage 3 Archaeological Assessment - Location 107 (A1/A1-129), WSP Canada Inc., August 2, 2024
  - Stage 3 Archaeological Assessment - Location 108 (A1/A1-130), WSP Canada Inc., August 2, 2024
  - Stage 3 Archaeological Assessment - Location 109 (A1/A1-131), WSP Canada Inc., August 2, 2024
  - Stage 3 Archaeological Assessment - Location 110 (A1/A1-132), WSP Canada Inc., August 2, 2024
  - Stage 3 Archaeological Assessment - Location 111 (A1/A1-133), WSP Canada Inc., August 2, 2024
  - Stage 3 Archaeological Assessment - Location 112 (A1/A1-134), WSP Canada Inc., August 2, 2024
  - Stage 3 Archaeological Assessment - Location 113 (A1/A1-135), WSP Canada Inc., August 2, 2024
  - Stage 3 Archaeological Assessment - Location 114 (A1/A1-136), WSP Canada Inc., August 2, 2024
  - Stage 3 Archaeological Assessment - Location 115 (A1/A1-137), WSP Canada Inc., August 2, 2024
  - Stage 3 Archaeological Assessment - Location 116 (A1/A1-138), WSP Canada Inc., August 2, 2024
  - Stage 3 Archaeological Assessment - Location 117 (A1/A1-139), WSP Canada Inc., August 2, 2024
  - Stage 3 Archaeological Assessment - Location 118 (A1/A1-140), WSP Canada Inc., August 2, 2024
  - Stage 3 Archaeological Assessment - Location 119 (A1/A1-141), WSP Canada Inc., August 2, 2024
  - Stage 3 Archaeological Assessment - Location 120 (A1/A1-142), WSP Canada Inc., August 2, 2024
  - Stage 3 Archaeological Assessment - Location 121 (A1/A1-143), WSP Canada Inc., August 2, 2024
  - Stage 3 Archaeological Assessment - Location 122 (A1/A1-144), WSP Canada Inc., August 2, 2024
  - Stage 3 Archaeological Assessment - Location 123 (A1/A1-145), WSP Canada Inc., August 2, 2024
  - Stage 3 Archaeological Assessment - Location 124 (A1/A1-146), WSP Canada Inc., August 2, 2024
  - Stage 3 Archaeological Assessment - Location 125 (A1/A1-147), WSP Canada Inc., August 2, 2024
  - Stage 3 Archaeological Assessment - Location 126 (A1/A1-148), WSP Canada Inc., August 2, 2024
  - Stage 3 Archaeological Assessment - Location 127 (A1/A1-149), WSP Canada Inc., August 2, 2024
  - Stage 3 Archaeological Assessment - Location 128 (A1/A1-150), WSP Canada Inc., August 2, 2024
  - Stage 3 Archaeological Assessment - Location 129 (A1/A1-151), WSP Canada Inc., August 2, 2024
  - Stage 3 Archaeological Assessment - Location 130 (A1/A1-152), WSP Canada Inc., August 2, 2024
  - Stage 3 Archaeological Assessment - Location 131 (A1/A1-153), WSP Canada Inc., August 2, 2024
  - Stage 3 Archaeological Assessment - Location 132 (A1/A1-154), WSP Canada Inc., August 2, 2024
  - Stage 3 Archaeological Assessment - Location 133 (A1/A1-155), WSP Canada Inc., August 2, 2024
  - Stage 3 Archaeological Assessment - Location 134 (A1/A1-156), WSP Canada Inc., August 2, 2024
  - Stage 3 Archaeological Assessment - Location 135 (A1/A1-157), WSP Canada Inc., August 2, 2024
  - Stage 3 Archaeological Assessment - Location 136 (A1/A1-158), WSP Canada Inc., August 2, 2024
  - Stage 3 Archaeological Assessment - Location 137 (A1/A1-159), WSP Canada Inc., August 2, 2024
  - Stage 3 Archaeological Assessment - Location 138 (A1/A1-160), WSP Canada Inc., August 2, 2024
  - Stage 3 Archaeological Assessment - Location 139 (A1/A1-161), WSP Canada Inc., August 2, 2024
  - Stage 3 Archaeological Assessment - Location 140 (A1/A1-162), WSP Canada Inc., August 2, 2024
  - Stage 3 Archaeological Assessment - Location 141 (A1/A1-163), WSP Canada Inc., August 2, 2024
  - Stage 3 Archaeological Assessment - Location 142 (A1/A1-164), WSP Canada Inc., August 2, 2024
  - Stage 3 Archaeological Assessment - Location 143 (A1/A1-165), WSP Canada Inc., August 2, 2024
  - Stage 3 Archaeological Assessment - Location 144 (A1/A1-166), WSP Canada Inc., August 2, 2024
  - Stage 3 Archaeological Assessment - Location 145 (A1/A1-167), WSP Canada Inc., August 2, 2024
  - Stage 3 Archaeological Assessment - Location 146 (A1/A1-168), WSP Canada Inc., August 2, 2024
  - Stage 3 Archaeological Assessment - Location 147 (A1/A1-169), WSP Canada Inc., August 2, 2024
  - Stage 3 Archaeological Assessment - Location 148 (A1/A1-170), WSP Canada Inc., August 2, 2024
  - Stage 3 Archaeological Assessment - Location 149 (A1/A1-171), WSP Canada Inc., August 2, 2024
  - Stage 3 Archaeological Assessment - Location 150 (A1/A1-172), WSP Canada Inc., August 2, 2024
  - Stage 3 Archaeological Assessment - Location 151 (A1/A1-173), WSP Canada Inc., August 2, 2024
  - Stage 3 Archaeological Assessment - Location 152 (A1/A1-174), WSP Canada Inc., August 2, 2024
  - Stage 3 Archaeological Assessment - Location 153 (A1/A1-175), WSP Canada Inc., August 2, 2024
  - Stage 3 Archaeological Assessment - Location 154 (A1/A1-176), WSP Canada Inc., August 2, 2024
  - Stage 3 Archaeological Assessment - Location 155 (A1/A1-177), WSP Canada Inc., August 2, 2024
  - Stage 3 Archaeological Assessment - Location 156 (A1/A1-178), WSP Canada Inc., August 2, 2024
  - Stage 3 Archaeological Assessment - Location 157 (A1/A1-179), WSP Canada Inc., August 2, 2024
  - Stage 3 Archaeological Assessment - Location 158 (A1/A1-180), WSP Canada Inc., August 2, 2024
  - Stage 3 Archaeological Assessment - Location 159 (A1/A1-181), WSP Canada Inc., August 2, 2024
  - Stage 3 Archaeological Assessment - Location 160 (A1/A1-182), WSP Canada Inc., August 2, 2024
  - Stage 3 Archaeological Assessment - Location 161 (A1/A1-183), WSP Canada Inc., August 2, 2024
  - Stage 3 Archaeological Assessment - Location 162 (A1/A1-184), WSP Canada Inc., August 2, 2024
  - Stage 3 Archaeological Assessment - Location 163 (A1/A1-185), WSP Canada Inc., August 2, 2024
  - Stage 3 Archaeological Assessment - Location 164 (A1/A1-186), WSP Canada Inc., August 2, 2024
  - Stage 3 Archaeological Assessment - Location 165 (A1/A1-187), WSP Canada Inc., August 2, 2024
  - Stage 3 Archaeological Assessment - Location 166 (A1/A1-188), WSP Canada Inc., August 2, 2024
  - Stage 3 Archaeological Assessment - Location 167 (A1/A1-189), WSP Canada Inc., August 2, 2024
  - Stage 3 Archaeological Assessment - Location 168 (A1/A1-190), WSP Canada Inc., August 2, 2024
  - Stage 3 Archaeological Assessment - Location 169 (A1/A1-191), WSP Canada Inc., August 2, 2024
  - Stage 3 Archaeological Assessment - Location 170 (A1/A1-192), WSP Canada Inc., August 2, 2024
  - Stage 3 Archaeological Assessment - Location 171 (A1/A1-193), WSP Canada Inc., August 2, 2024
  - Stage 3 Archaeological Assessment - Location 172 (A1/A1-194), WSP Canada Inc., August 2, 2024
  - Stage 3 Archaeological Assessment - Location 173 (A1/A1-195), WSP Canada Inc., August 2, 2024
  - Stage 3 Archaeological Assessment - Location 174 (A1/A1-196), WSP Canada Inc., August 2, 2024
  - Stage 3 Archaeological Assessment - Location 175 (A1/A1-197), WSP Canada Inc., August 2, 2024
  - Stage 3 Archaeological Assessment - Location 176 (A1/A1-198), WSP Canada Inc., August 2, 2024
  - Stage 3 Archaeological Assessment - Location 177 (A1/A1-199), WSP Canada Inc., August 2, 2024
  - Stage 3 Archaeological Assessment - Location 178 (A1/A1-200), WSP Canada Inc., August 2, 2024
  - Stage 3 Archaeological Assessment - Location 179 (A1/A1-201), WSP Canada Inc., August 2, 2024
  - Stage 3 Archaeological Assessment - Location 180 (A1/A1-202), WSP Canada Inc., August 2, 2024
  - Stage 3 Archaeological Assessment - Location 181 (A1/A1-203), WSP Canada Inc., August 2, 2024
  - Stage 3 Archaeological Assessment - Location 182 (A1/A1-204), WSP Canada Inc., August 2, 2024
  - Stage 3 Archaeological Assessment - Location 183 (A1/A1-205), WSP Canada Inc., August 2, 2024
  - Stage 3 Archaeological Assessment - Location 184 (A1/A1-206), WSP Canada Inc., August 2, 2024
  - Stage 3 Archaeological Assessment - Location 185 (A1/A1-207), WSP Canada Inc., August 2, 2024
  - Stage 3 Archaeological Assessment - Location 186 (A1/A1-208), WSP Canada Inc., August 2, 2024
  - Stage 3 Archaeological Assessment - Location 187 (A1/A1-209), WSP Canada Inc., August 2, 2024
  - Stage 3 Archaeological Assessment - Location 188 (A1/A1-210), WSP Canada Inc., August 2, 2024
  - Stage 3 Archaeological Assessment - Location 189 (A1/A1-211), WSP Canada Inc., August 2, 2024
  - Stage 3 Archaeological Assessment - Location 190 (A1/A1-212), WSP Canada Inc., August 2, 2024
  - Stage 3 Archaeological Assessment - Location 191 (A1/A1-213), WSP Canada Inc., August 2, 2024
  - Stage 3 Archaeological Assessment - Location 192 (A1/A1-214), WSP Canada Inc., August 2, 2024
  - Stage 3 Archaeological Assessment - Location 193 (A1/A1-215), WSP Canada Inc., August 2, 2024
  - Stage 3 Archaeological Assessment - Location 194 (A1/A1-216), WSP Canada Inc., August 2, 2024
  - Stage 3 Archaeological Assessment - Location 195 (A1/A1-217), WSP Canada Inc., August 2, 2024
  - Stage 3 Archaeological Assessment - Location 196 (A1/A1-218), WSP Canada Inc., August 2, 2024
  - Stage 3 Archaeological Assessment - Location 197 (A1/A1-219), WSP Canada Inc., August 2, 2024
  - Stage 3 Archaeological Assessment - Location 198 (A1/A1-220), WSP Canada Inc., August 2, 2024
  - Stage 3 Archaeological Assessment - Location 199 (A1/A1-221), WSP Canada Inc., August 2, 2024
  - Stage 3 Archaeological Assessment - Location 200 (A1/A1-222), WSP Canada Inc., August 2, 2024
  - Stage 3 Archaeological Assessment - Location 201 (A1/A1-223), WSP Canada Inc., August 2, 2024
  - Stage 3 Archaeological Assessment - Location 202 (A1/A1-224), WSP Canada Inc., August 2, 2024
  - Stage 3 Archaeological Assessment - Location 203 (A1/A1-225), WSP Canada Inc., August 2, 2024
  - Stage 3 Archaeological Assessment - Location 204 (A1/A1-226), WSP Canada Inc., August 2, 2024
  - Stage 3 Archaeological Assessment - Location 205 (A1/A1-227), WSP Canada Inc., August 2, 2024
  - Stage 3 Archaeological Assessment - Location 206 (A1/A1-228), WSP Canada Inc., August 2, 2024
  - Stage 3 Archaeological Assessment - Location 207 (A1/A1-229), WSP Canada Inc., August 2, 2024
  - Stage 3 Archaeological Assessment - Location 208 (A1/A1-230), WSP Canada Inc., August 2, 2024
  - Stage 3 Archaeological Assessment - Location 209 (A1/A1-231), WSP Canada Inc., August 2, 2024
  - Stage 3 Archaeological Assessment - Location 210 (A1/A1-232), WSP Canada Inc., August 2, 2024
  - Stage 3 Archaeological Assessment - Location 211 (A1/A1-233), WSP Canada Inc., August 2, 2024
  - Stage 3 Archaeological Assessment - Location 212 (A1/A1-234), WSP Canada Inc., August 2, 2024
  - Stage 3 Archaeological Assessment - Location 213 (A1/A1-235), WSP Canada Inc., August 2, 2024
  - Stage 3 Archaeological Assessment - Location 214 (A1/A1-236), WSP Canada Inc., August 2, 2024
  - Stage 3 Archaeological Assessment - Location 215 (A1/A1-237), WSP Canada Inc., August 2, 2024
  - Stage 3 Archaeological Assessment - Location 216 (A1/A1-238), WSP Canada Inc., August 2, 2024
  - Stage 3 Archaeological Assessment - Location 217 (A1/A1-239), WSP Canada Inc., August 2, 2024
  - Stage 3 Archaeological Assessment - Location 218 (A1/A1-240), WSP Canada Inc., August 2, 2024
  - Stage 3 Archaeological Assessment - Location 219 (A1/A1-241), WSP Canada Inc., August 2, 2024
  - Stage 3 Archaeological Assessment - Location 220 (A1/A1-242), WSP Canada Inc., August 2, 2024
  - Stage 3 Archaeological Assessment - Location 221 (A1/A1-243), WSP Canada Inc., August 2, 2024
  - Stage 3 Archaeological Assessment - Location 222 (A1/A1-244), WSP Canada Inc., August 2, 2024
  - Stage 3 Archaeological Assessment - Location 223 (A1/A1-245), WSP Canada Inc., August 2, 2024
  - Stage 3 Archaeological Assessment - Location 224 (A1/A1-246), WSP Canada Inc., August 2, 2024
  - Stage 3 Archaeological Assessment - Location 225 (A1/A1-247), WSP Canada Inc., August 2, 2024
  - Stage 3 Archaeological Assessment - Location 226 (A1/A1-248), WSP Canada Inc., August 2, 2024
  - Stage 3 Archaeological Assessment - Location 227 (A1/A1-249), WSP Canada Inc., August 2, 2024
  - Stage 3 Archaeological Assessment - Location 228 (A1/A1-250), WSP Canada Inc., August 2, 2024
  - Stage 3 Archaeological Assessment - Location 229 (A1/A1-251), WSP Canada Inc., August 2, 2024
  - Stage 3 Archaeological Assessment - Location 230 (A1/A1-252), WSP Canada Inc., August 2, 2024
  - Stage 3 Archaeological Assessment - Location 231 (A1/A1-253), WSP Canada Inc., August 2, 2024
  - Stage 3 Archaeological Assessment - Location 232 (A1/A1-254), WSP Canada Inc., August 2, 2024
  - Stage 3 Archaeological Assessment - Location 233 (A1/A1-255), WSP Canada Inc., August 2, 2024
  - Stage 3 Archaeological Assessment - Location 234 (A1/A1-256), WSP Canada Inc., August 2, 2024
  - Stage 3 Archaeological Assessment - Location 235 (A1/A1-257), WSP Canada Inc., August 2, 2024
  - Stage 3 Archaeological Assessment - Location 236 (A1/A1-258), WSP Canada Inc., August 2, 2024
  - Stage 3 Archaeological Assessment - Location 237 (A1/A1-259), WSP Canada Inc., August 2, 2024
  - Stage 3 Archaeological Assessment - Location 238 (A1/A1-260), WSP Canada Inc., August 2, 2024
  - Stage 3 Archaeological Assessment - Location 239 (A1/A1-261), WSP Canada Inc., August 2, 2024
  - Stage 3 Archaeological Assessment - Location 240 (A1/A1-262), WSP Canada Inc., August 2, 2024
  - Stage 3 Archaeological Assessment - Location 241 (A1/A1-263), WSP Canada Inc., August 2, 2024
  - Stage 3 Archaeological Assessment - Location 242 (A1/A1-264), WSP Canada Inc., August 2, 2024
  - Stage 3 Archaeological Assessment - Location 243 (A1/A1-265), WSP Canada Inc., August 2, 2024
  - Stage 3 Archaeological Assessment - Location 244 (A1/A1-266), WSP Canada Inc., August 2, 2024
  - Stage 3 Archaeological Assessment - Location 245 (A1/A1-267), WSP Canada Inc., August 2, 2024
  - Stage 3 Archaeological Assessment - Location 246 (A1/A1-268), WSP Canada Inc., August 2, 2024
  - Stage 3 Archaeological Assessment - Location 247 (A1/A1-269), WSP Canada Inc., August 2, 2024
  - Stage 3 Archaeological Assessment - Location 248 (A1/A1-270), WSP Canada Inc., August 2, 2024
  - Stage 3 Archaeological Assessment - Location 249 (A1/A1-271), WSP Canada Inc., August 2, 2024
  - Stage 3 Archaeological Assessment - Location 25







**Legend**

- Licence Boundary
- Limit of Extraction
- Contours with Elevation
- Watercourse
- Watercourse
- Water Feature
- Wooded Area
- Wetland
- Wetland
- Gradual Grade / Island
- Grassland
- Woodland
- Wetland
- Lake
- Meadow
- Off-site Woodland
- Off-site Meadow

**Additional Land Owned by Licensee**

**120m Offset From Licence Boundary**

**Easement**

**Pipeline**

**Main Discharge**

**Secondary Discharge**

**Fence**

**Extraction Face**

**Public Road**

**Driveway**

**Railway**

**Gate**

**Building/Structure**

**Proposed Floor Elevation**

**Proposed Final Grade**

**Rock Pile & Bat Box Locations**

**Cross Sections**

**Legend - Cross Sections**

- Licence Boundary
- Limit of Extraction
- Existing Grade - Removed / Altered
- Existing Grade - Undisturbed
- Maximum Predicted Water Table
- Quarry Floor
- Backfilled
- Lake

**Site Plan Amendments**

No.	Date	Description	By
6	May 2025	Update the site plan to address agency comments	C.P.
7	July 2025	Update the site plan to address agency and public comments	C.P.
8	July 2025	Update the site plan to address agency and public comments	C.P.
4	May 2025	Update the site plan to address agency and public comments	C.P.
3	March 2025	Update the site plan to address agency and public comments	C.P.
2	August 2024	Updated the site plan to address the MNR's comments from their letter dated January 11, 2024 and the Town of Caledon's comments from their letter dated November 11, 2023	C.P.
1	August 2023	Revised drawing to incorporate updated technical report recommendations	C.P.

**MHBC Stamp**

**Brian Zeman**  
 Is authorized by the Ministry of Northern Development and Forestry pursuant to Subsection 2.0(3)(f) of the Environmental Protection Act, 1997 to prepare and certify site plans.

**Christopher Poole**  
 Is authorized by the Ministry of Northern Development and Forestry pursuant to Subsection 2.0(3)(f) of the Environmental Protection Act, 1997 to prepare and certify site plans.

**MHBC Stamp**

**Applciant**

**cbm** CBM Aggregates a Division of St. Marys Cement Inc. (Canada)  
 55 Industrial Street  
 Toronto, Ontario  
 M4G 3W9

**Project**  
**Caledon Pit & Quarry**  
 18722 Main Street, Caledon, Ontario

**MNR Licence Reference No.**  
 626600

**Plan Scale:** 1:5000 (Arch'E)

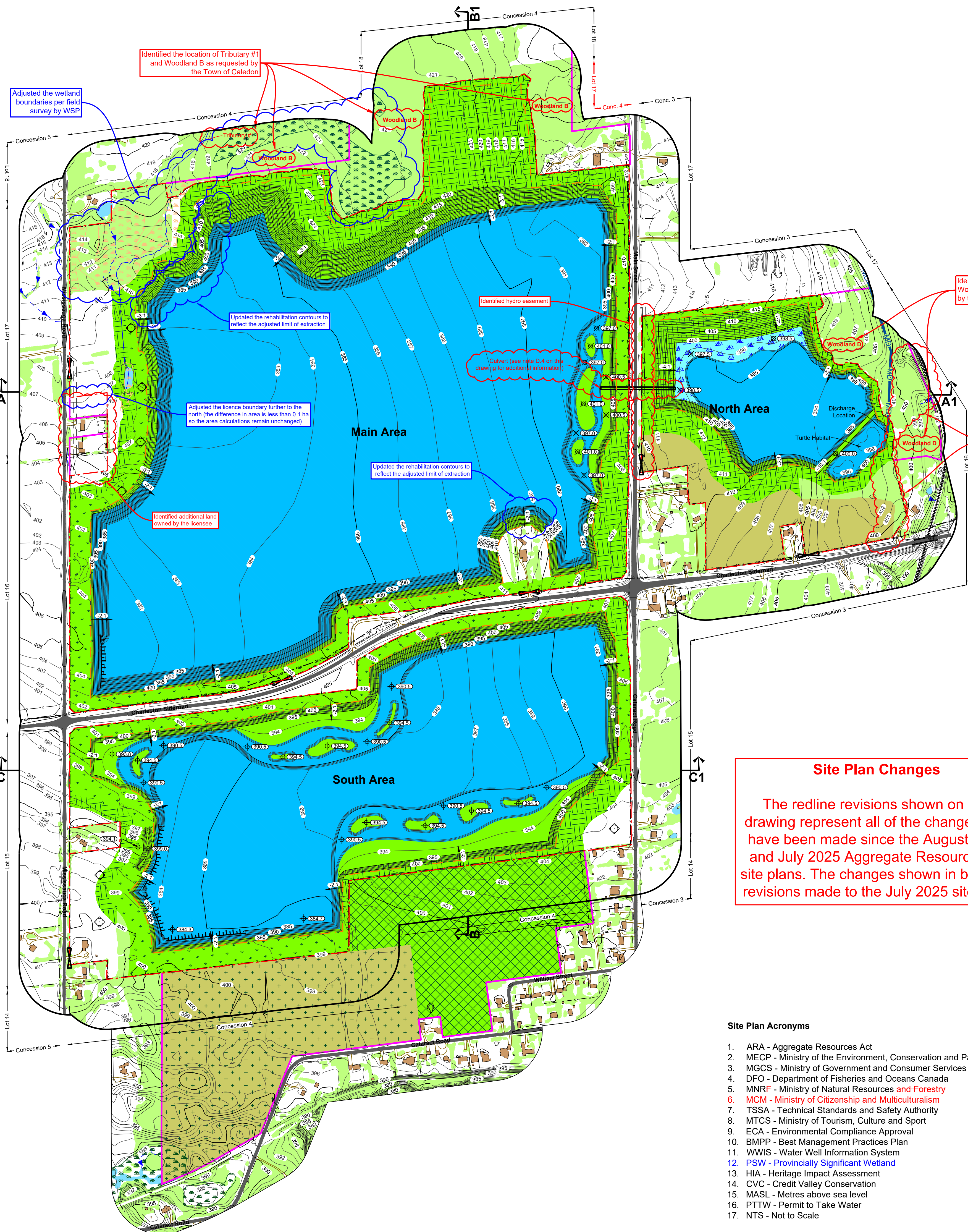
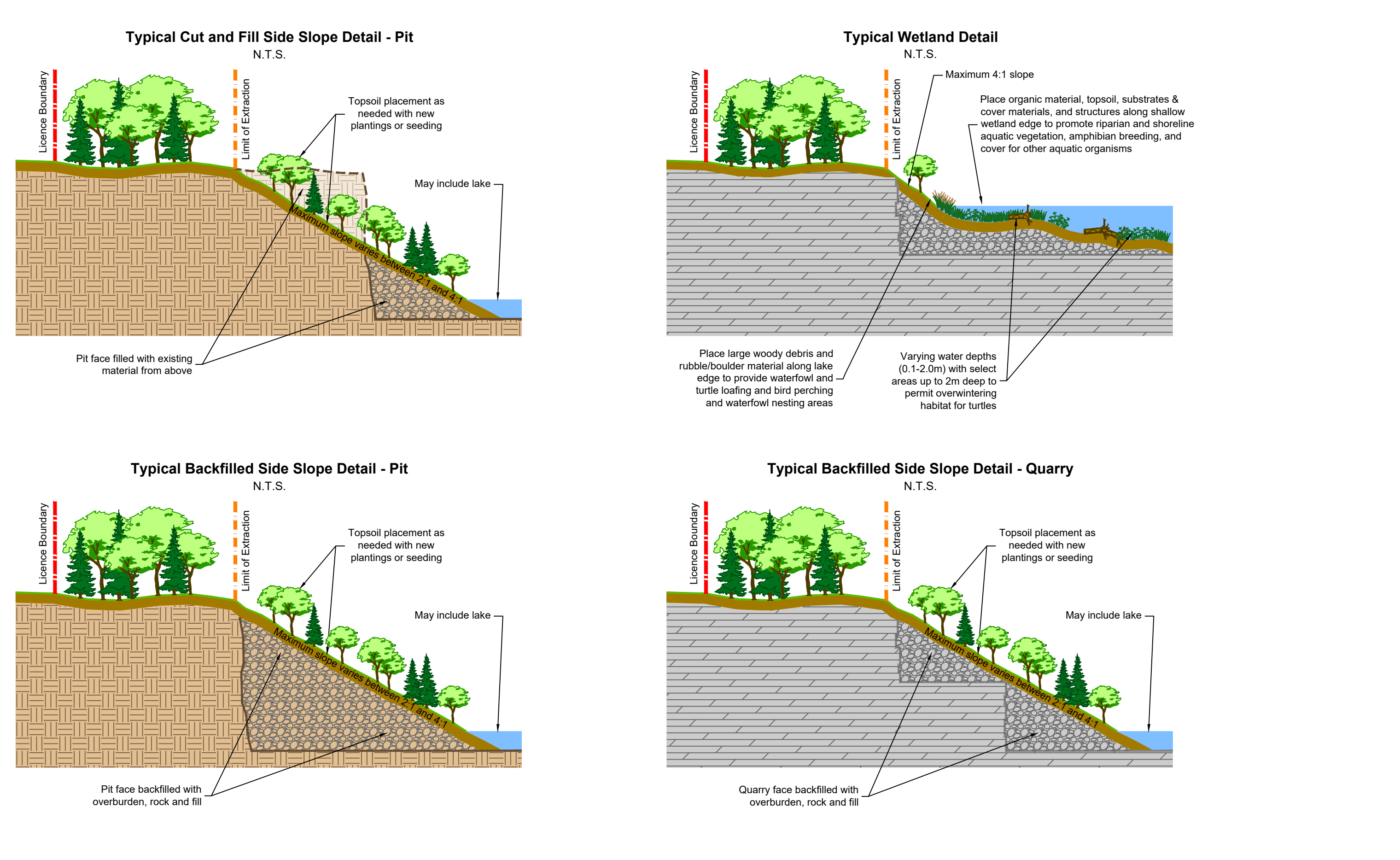
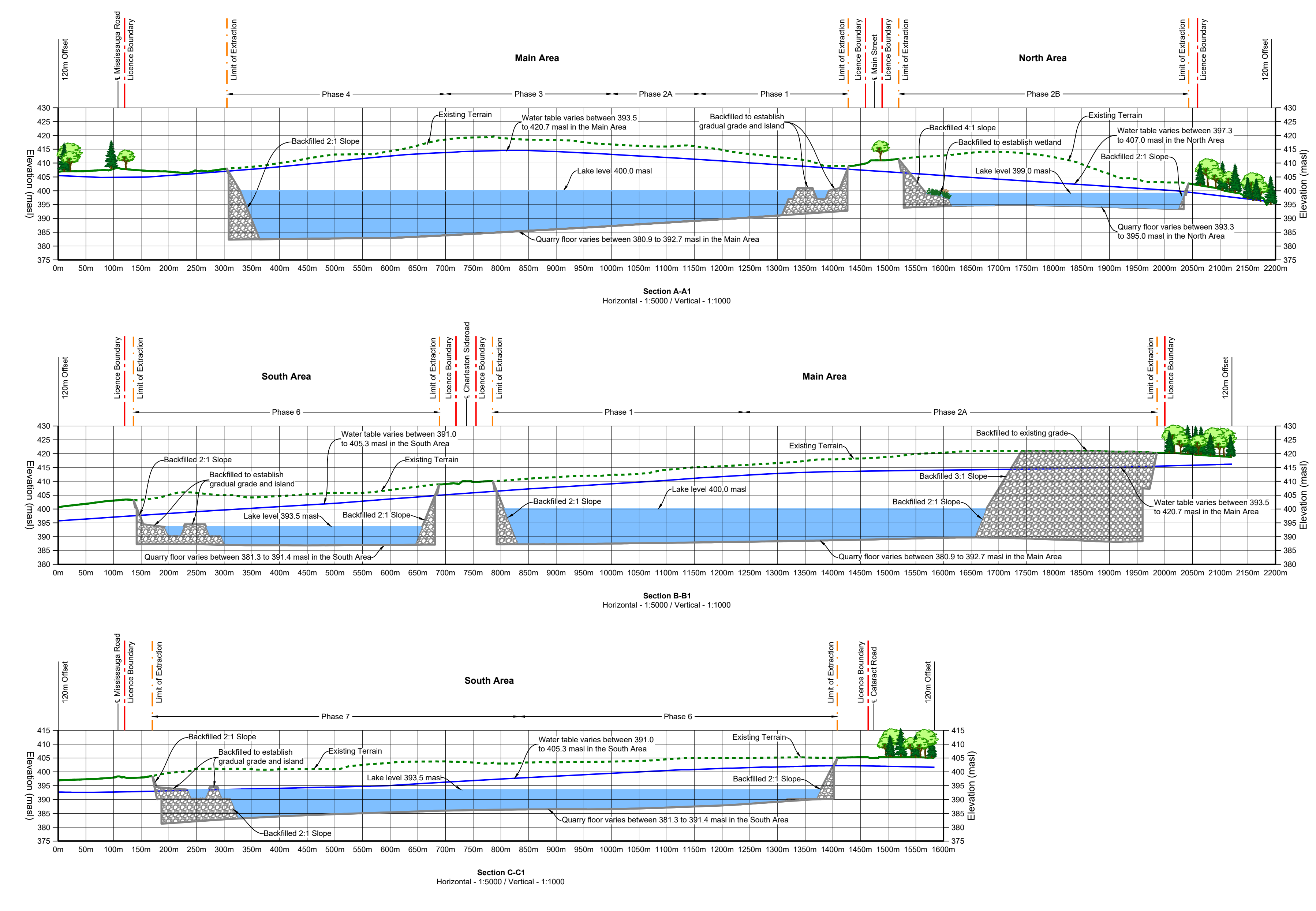
**Date:** August 2023  
**May 2026**

**Drawn By:** C.P.  
**Checked By:** B.Z.

**File No.**  
 8816AF

**Drawing No.**  
 4 of 45 of 5

**File Path**  
 \\B:\8816AF - CBM - Caledon Quarry\Drawings\Site Plan\CAD\8816AF - Site Plan.dwg



- PROGRESSIVE REHABILITATION**
- A. General**
- Area Calculations:
    - 1.1. Licence (total): 261.2 hectares
      - Main Area: 151.5 hectares
      - North Area: 30.3 hectares
      - South Area: 79.4 hectares
    - 1.2. Limit of Extraction (total): 199.38 hectares
      - Main Area: 123.48 hectares
      - North Area: 16.0 hectares
      - South Area: 59.9 hectares
    - 1.3. Final rehabilitation within licence (total): 261.2 hectares
      - Gradual grade or island: 7.8 hectares
      - Grassland: 25.3 hectares
      - Lake: 157.78 hectares
      - Meadow: 7.6 hectares
      - Woodland: 45.2 hectares
      - Existing conditions: 15.5 hectares
  - Phasing:
    - As excavation reaches the limit of extraction or maximum depth, progressive rehabilitation shall commence. See note M.1 on drawing 2 of 54 for the maximum disturbed area requirement for rehabilitation of the site.
    - Progressive rehabilitation shall follow the general direction and sequence of extraction identified on the plan view and described in the notes on drawing 2 of 54.
    - Minor deviations in operational and rehabilitation sequence shall be permitted in order to adjust for any variable resource or market conditions.
    - Each phase of extraction shall undergo progressive rehabilitation, prior to proceeding to the next phase of extraction.
    - Progressive rehabilitation activities shall include sloping and grading, placement of overburden and topsoil, tree and shrub planting.
  - Slopes and Grading:
    - Progressive rehabilitation shall consist of backfilling the excavation faces (where applicable), tunnels and quarry floors to establish the final elevations and grades depicted on the plan view of this drawing using topsoil and overburden available on-site. A portion of the extraction face in the northern corner of Phases 5 and 3 (as shown on the plan view) shall remain vertical (see notes H.3.5 and H.4.1.17 on drawing 2 of 54 for additional information).
    - Upon completion of extraction in Phase 3, the slurry wall adjacent to the infiltration trenches in the southwest and southeast corner of the South Area shall be excavated and backfilled with sand.
    - Side sloping on-site will range from 2:1 to 4:1 as well as gradual grades (see Section N Variations from Control and Operation Standards on drawing 2 of 54).
    - No excess soil shall be imported on-site for rehabilitation purposes.
    - Prior to the placement of subsoil and topsoil in locations where the quarry floor has been backfilled to establish gradual grades, islands and wetlands, the quarry floor shall be ripped and tamped to alternate compaction, if required.
    - All rehabilitated pond levels and outlets will be passive and not require pumping.
  - Drainage:
    - Final surface drainage will follow the rehabilitated contours and directional arrows shown on the plan view of this drawing.
    - Once operations in the North Area, South Area and Main Area have been completed and the rehabilitated landform has been established, pumping shall cease, and the land allowed to flood from the Main, North and South ponds. The Main, North and South pond water levels post-rehabilitation are predicted to reach a level of approximately -400, -399 and -392.5 masl, respectively.
    - The South pond will be self-contained and not require an overflow outlet.
    - The Main pond overflow shall be directed via a culvert under Main Street (as shown on the plan view of this drawing) to the North pond with its outlet level at -403 masl.
    - The North pond overflow shall be directed via main outlet to the Quarry Valley Golf Course Irrigation pond system with its outlet level at -390 masl.
    - All rehabilitated pond levels and outlets will be passive and not require pumping.
  - Natural Environment:
    - Lake Shoreline - Main, North and South Area:
      - The shoreline of the lakes shall be contoured where possible to create convoluted or irregular shoreline gradients.
      - Where sloping and excavation depths allow, stone or rubble shall be used to increase habitat diversity.
      - Stumps and logs shall be placed along the shoreline as wildlife habitat structure. Bundles and rock rubble from the extraction shall also be used for wildlife habitat structure.
    - Woodland - Main Area:
      - The woodland in the Main Area, as shown on the plan view, shall be planted with tree species representative of the woodland communities that will be removed, such as sugar maple, American beech, paper birch, white ash, white cedar, balsam fir, eastern hemlock, red maple, herring gale, black cherry, alternate-leaved dogwood, grey dogwood, red cedar, red cedar dogwood.
      - Trees shall be planted at approximately 2.5 m spacing to achieve a density of 1,600 seedlings per hectare. Where there are planting the large density shall be 1,600 seedlings per hectare with an average rate of 70% into plantings shall be completed in response to year after year tree mortality. The trees shall be monitored for five years to achieve a 75% survival rate. During the monitoring period, site plantings shall be completed. Required to ensure the woodland achieves a minimum density of 1,200 trees per hectare.
      - Herbicide control shall be implemented at the time of planting for deer, rabbits and rodents and shall include granular amilor herbicide.
    - Habitat for eastern small-footed myotis, and blue-brown myotis, eastern red, hoary and silver-haired - Main Area:
      - Rock piles shall be placed in the locations shown on the plan view to create habitat for eastern small-footed myotis. Rock piles shall vary in size and height between 0.5 m and 2 m. Cleveholes shall be created through slacking mats of flint rock varying in size from several centimeters to one meter long.
      - Bat boxes shall be installed in the same location as the rock piles to provide habitat for little brown myotis.
    - Setback areas / Slopes - Main, North and South Area:
      - All slopes located above the final water level shall be seeded with an appropriate native, non-invasive seed mix to prevent erosion during operations.
      - Native plantings shall be expanded naturally through seed rain.
      - Along the setback to significant Woodland B, as shown on drawing 1 of 54, plant species representative of the existing woodland, such as sugar maple (Acer saccharum), American beech (Fagus grandifolia), paper birch (Betula papyrifera), American elm (Ulmus americana), white cedar (Thuja occidentalis), balsam fir (Abies balsamea), eastern hemlock (Tsuga canadensis), red maple (Acer rubrum), herring gale (Cornus pennsylvanica), black cherry (Prunus serotina), alternate-leaved dogwood (Cornus alternifolia), grey dogwood (Cornus racemosa), red cedar dogwood (Cornus canadensis), shall be planted.
      - Along the setback to significant Woodland D, as shown on drawing 1 of 54, plant species representative of the existing woodland, such as sugar maple (Acer saccharum), American beech (Fagus grandifolia), red oak (Quercus rubra), paper birch (Betula papyrifera), black walnut (Juglans nigra), American elm (Ulmus americana), alternate-leaved dogwood (Cornus alternifolia), shall be planted.
      - On north-facing slopes and setbacks which are expected to be cooler and moister, plant species such as white cedar (Thuja occidentalis), white spruce (Picea glauca), Norway spruce (Picea abies), red maple (Acer rubrum), paper birch (Betula papyrifera), American beech (Fagus grandifolia), black cherry (Prunus serotina), red oak (Quercus rubra), shall be planted.
      - On the east-west-facing slopes and setbacks, plant species such as white pine (Pinus strobus), white cedar (Thuja occidentalis), white spruce (Picea glauca), European larch (Larix laricina), trembling aspen (Populus tremuloides), balsam poplar (Populus balsamifera), sugar maple (Acer saccharum), black cherry (Prunus serotina), red oak (Quercus rubra), shall be planted.
      - Within the setback and slope areas shrubs shall also be planted to add diversity and increase wildlife/habitat diversity, such as: seeweedberry (Amelanchier spp.), nannyberry (Viburnum lentago), shadbush (Physocarpus opulifolius), dogwood (Cornus spp.), highbush cranberry (Viburnum corymbosum), elderberry (Sambucus spp.), choke cherry (Prunus virginiana).
  - Shoreline Wetland - Main, North and South Area:
    - Organic material shall be placed in shallow water areas to promote the establishment of shoreline and aquatic vegetation and to create habitat for aquatic fauna and amphibians. Stumps and trees of non-commercial value shall be stockpiled during clearing operations and used as habitat structure. Bundles and rock rubble from the extraction operation shall also be used to increase habitat diversity along the shoreline area, where possible.
    - In the shoreline wetland area, shallow emergent marsh vegetation shall be planted in the water with species that may occur, but are not listed to include: common reed (Phragmites communis), slender yellow (Sagittaria arifolia), and herbaceous plants such as water plantain (Alisma plantago-aquatica), lake sedge (Carex lasiocarpa), swamp milkweed (Asclepias incarnata), softstem bulrush (Scirpus americanus), and common cattail (Typha latifolia).
    - Riparian Plantings - Main Area:
      - Riparian plantings along Tributary #1, as shown on drawing 2 of 54, shall include a variety of native species including, but not limited to, white cedar (Thuja occidentalis), balsam poplar (Populus balsamifera), pussy willow (Salix petiolaris), meadow dogwood (Cornus rugosa), river birch (Betula nana), black cherry (Prunus serotina), blackberry (Rubus occidentalis), meadow sparrow (Sialia sialis), blue jay (Cyanus cristatus), lake sedge (Carex lasiocarpa), fox sedge (Carex vulpinoidea), blue vervain (Verbena hastata), and white top spurge (Euphorbia spp.).
  - Turtle Habitat - North Area:
    - Turtle habitat shall be created in the North Area in the location as shown on the plan view.
    - The turtle habitat pond shall include sediment on the pond bottom to provide a growing medium for plants, and provide habitat for turtles (e.g., overwintering).
    - Plant emergent macrophytes shall include species such as pickereweed (Pontederica cordata), broad-leaved arrowhead (Sagittaria latifolia), slender reed (Najas flexilis), common hornwort (Ceratophyllum demersum).
    - Plant submergent macrophytes shall include species such as water hyacinth (Eichhornia crassipes), broad water hyacinth (Eichhornia crassipes), and water hyacinth (Eichhornia crassipes).
    - Banking features such as logs or rocks shall be placed throughout the shallow shoreline areas.
    - Areas of suitable nesting substrate shall be constructed along or adjacent to the shoreline.
  - Meadow in North Area:
    - Meadow habitat for eastern meadowlark and bobolink shall be created in the North Area outside of the limit of extraction at the location shown on the plan view.
    - A minimum of 60-80% of the meadow shall be covered by at least three different grass species, such as: poverty oatgrass (Danthonia spicata), bottlebrush grass (Elymus hystrix), common panic grass (Panicum capillare), big bluestem (Andropogon gerardii), Canada wild rye (Elymus canadensis), switch grass (Panicum virgatum), woodgrass (Sorghum nuttallii), Virginia wild rye (Elymus virginicus).
    - At least one of the grass species shall be taller than 90 cm, which shall include at least one of the following: bottlebrush grass (1.3 m), big bluestem (1.0 m), Canada wild rye (1.3 m), switch grass (1.6 m).
    - Remaining 20-40% shall be covered by forbs or legumes such as Canada anemone (Anemone canadensis), black-eyed susan (Rudbeckia hirta), common evening primrose (Oenothera biennis), common milkweed (Asclepias syriaca), yellow (Achillea millefolium), New England aster (Symphyotrichum novae-angliae), and wild bergamot (Monarda fistulosa).
    - Meadow seed mixes shall be sown at a rate of 25kg/ha.

- FINAL REHABILITATION**
- A. General**
- All equipment and buildings/structures on the quarry floor shall be removed from the site. The buildings/structures located at 14200 Charleston Science (utilized as an office and quarry control during operations) may remain in-situ.
  - No internal haul roads shall remain.
  - The allocated final use and will be naturalized open spaces with the creation of lakes, vegetated shorelines, islands, vertical faces, wetlands, sloped graded areas, riparian plantings adjacent to the existing watercourse, noise barrier and tree planting on open areas, grassland meadows and specialized habitat features for bats and turtles.
  - The long term average lake levels are:
    - Main - 400.0 masl
    - North - 399.0 masl
    - South - 393.5 masl
  - All plantings completed as per plan of rehabilitation will be assessed two years after planting to assess planting survival rates and additional plantings shall be completed if required. If required, the assessment shall be completed as part of rehabilitation monitoring. All monitoring of the off-site ecological enhancement areas shall be monitored for five years after planting to assess planting survival rates and additional plantings shall be completed if required. If required, the assessment shall be completed as part of rehabilitation monitoring.
  - During monitoring of rehabilitated areas and the off-site ecological enhancement areas, invasive species control methods may include of required mowing, spot spraying, spot burning using a site torch, and flooding. Herbicide application shall be undertaken on a species-specific basis and shall be applied judiciously and used as a last resort. Spot sprayers and/or wicking devices shall be used to minimize the inadvertent spread of herbicide to native vegetation.
  - During monitoring of rehabilitated areas and the off-site meadow areas, the licensee shall also complete visual inspection of the following habitat features for species use: Bat boxes and rock piles for the presence of white and grey bats during the active period between May and August; turtle habitat boxes during the active period between May and July; and meadow habitat boxes during the breeding season between May and July.

**Site Plan Changes**

The redline revisions shown on this drawing represent all of the changes that have been made since the August 2023 and July 2025 Aggregate Resource Act site plans. The changes shown in blue are revisions made to the July 2025 site plan.

- Site Plan Acronyms**
- ARA - Aggregate Resources Act
  - MCEP - Ministry of the Environment, Conservation and Parks
  - MGCS - Ministry of Government and Consumer Services
  - DFO - Department of Fisheries and Oceans Canada
  - MNRF - Ministry of Natural Resources and Forestry
  - MCM - Ministry of Citizenship and Multiculturalism
  - TSSA - Technical Standards and Safety Authority
  - MTCSS - Ministry of Tourism, Culture and Sport
  - ECA - Environmental Compliance Approval
  - BMP - Best Management Practices Plan
  - WWIS - Water Well Information System
  - PSW - Provincially Significant Wetland
  - HIA - Heritage Impact Assessment
  - CVC - Credit Valley Conservation
  - MASL - Metres above sea level
  - FTTW - Permit to Take Water
  - NTS - Not to Scale